

Dear Leonid Schneider,

We are upset about what happened because we have always worked with honesty, integrity, and respect for science. We received your email just today. We noticed that you wrote a previous email, but we received it in the spam folder. Nevertheless, we received some enquiries from Pubpeer about manuscripts containing potential errors and immediately took action to solve the queries as soon as possible. We have already contacted some of the Journals involved to provide the corrected figures for a corrigendum (see below).

We need more time for other enquiries, but we are reviewing them carefully and will reply to the Editor in Chief of Journals as soon as possible. We would like to emphasize that all these mistakes were unintentionally made during the preparation of the figures and do not alter the content of the results or conclusions of the manuscripts.

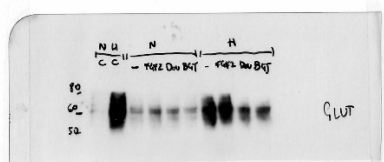
Reply to Oncotarget

Dear Justin Sheehan,

Editor of Oncotarget

Thank you for bringing this to our attention. We apologize for the inconvenience.

It is possible that the error was due to mixing blots taken at multiple exposures. The full original blot is shown in the attached figure.



Please note that the first and second lines represent controls for the specificity of GLUT-1 immunodetection by western blotting, which were omitted from the final version of the figure in the manuscript.

Nevertheless, the error does not affect the conclusion of the results.

Based on the Editor in Chief opinion, we are ready to add a corrigendum to the published manuscript.

Best regards,

Claudia Fumarola and Mara Bonelli

Reply to Biochemical Pharmacology

Dear Dr. Jacques Piette

Editor in Chief

Biochemical Pharmacology

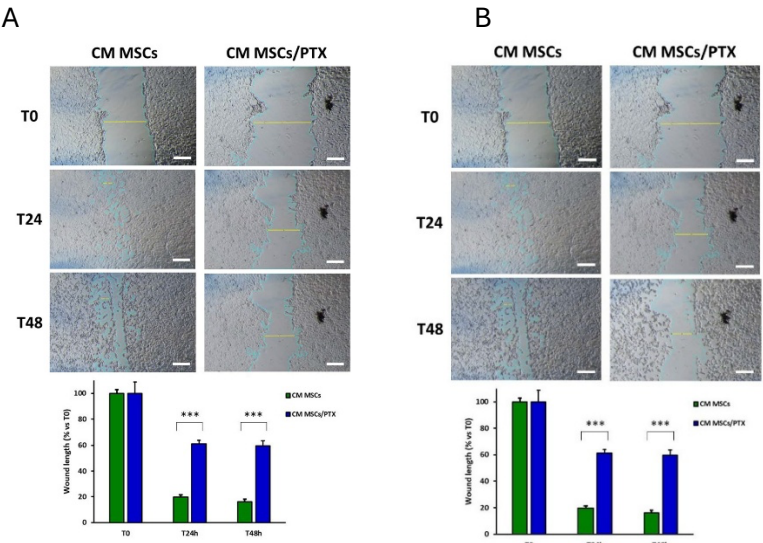
In the manuscript "Mesenchymal Stromal Cells Loaded with Paclitaxel (PacliMES): A Potential New Therapeutic Approach on Mesothelioma," published in Biochemical Pharmacology in 2023 (0.1016/j.bcp.2023.115678), Figure 3 should be replaced since an erroneous image was identified as representative of the CM MSCs/PTX photo for the T48h. It is possible that when the figure was prepared for the revised version of the manuscript, the panel of 24h was mislabeled and/or assembled incorrectly and was, therefore, inserted twice in the final figure. We apologize for this mistake, but we do not believe it affects the paper's conclusions.

Please find attached the original figure A, the revised figure B and a signed list of all co-authors who have agreed to this requirement.

In light of your feedback, we will prepare a corrigendum for the manuscript.

Yours sincerely

Dr. Roberta Alfieri



Reply to Cancers

Dear Editor of Cancers,

In the manuscript "Pemetrexed Enhances Membrane PD-L1 Expression and Potentiates T Cell-Mediated Cytotoxicity by Anti-PD-L1 Antibody Therapy in Non-Small-Cell Lung Cancer" published in Cancers in 2020 (doi.org/10.3390/cancers12030666), Figure 2C should be replaced since an erroneous image of Actin was inserted as loading control. This probably has been a mistake during figure preparation. We apologize for this error, but the paper's conclusions remain unchanged. Please find attached the original A and revised B figures.

In light of your feedback, we will prepare a corrigendum for the manuscript.

Yours sincerely

Dr. Andrea Cavazzoni

