

Fig. 4. Splicing (enhanced contrast)

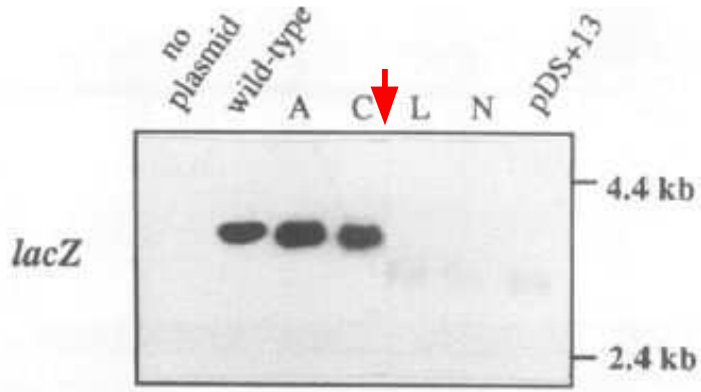


Fig. 7B & 7C. Splicing (enhanced contrast)

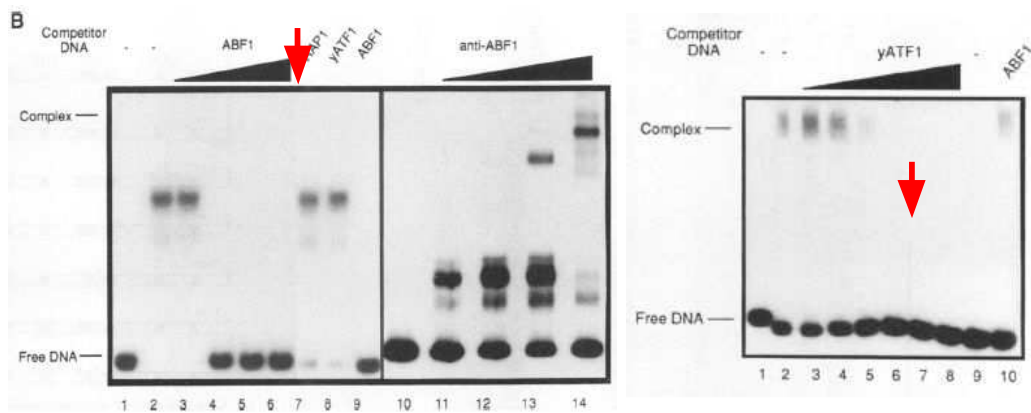


Fig. 7. Enhanced contrast or magnification reveals splicing of gel

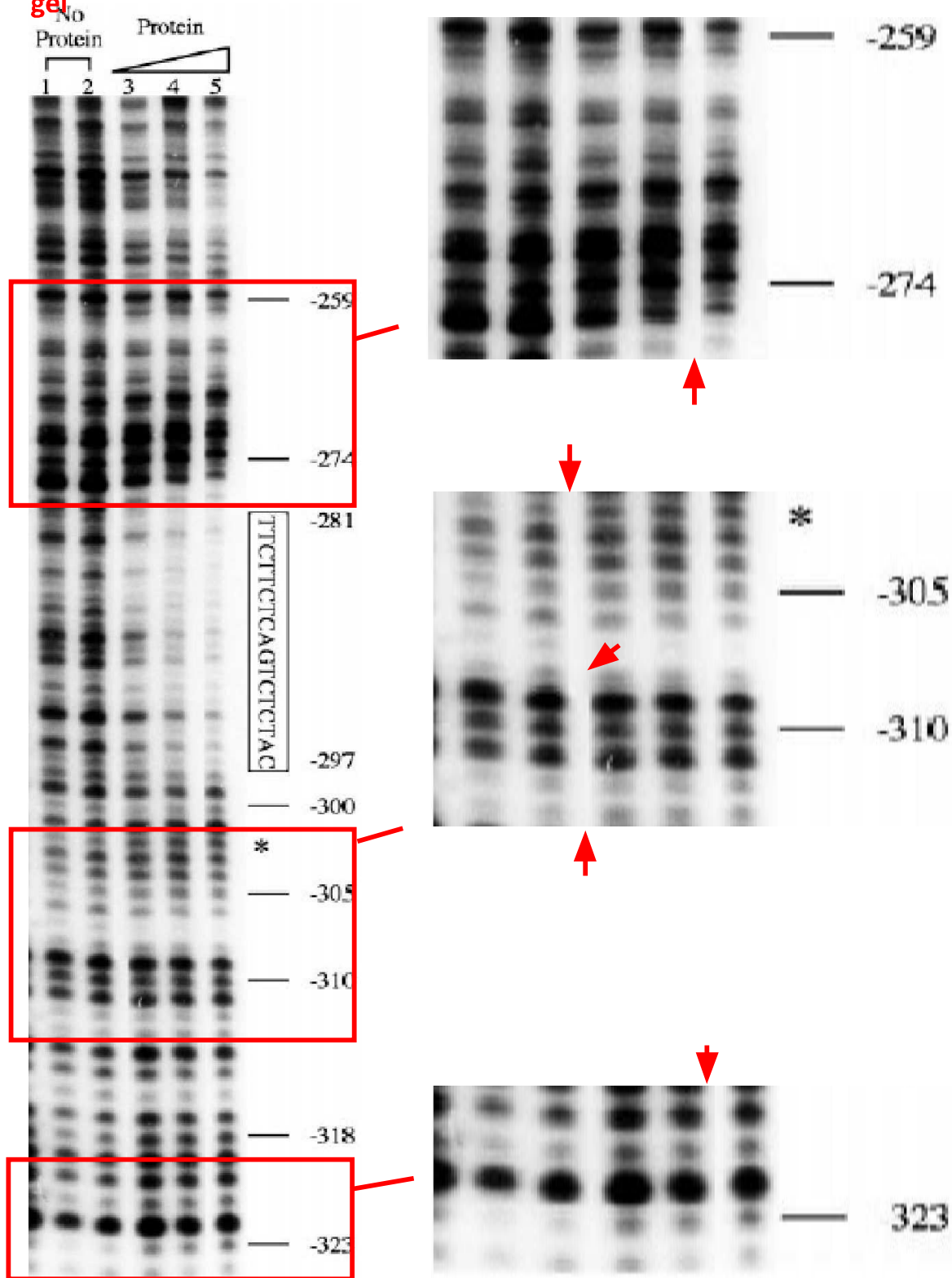
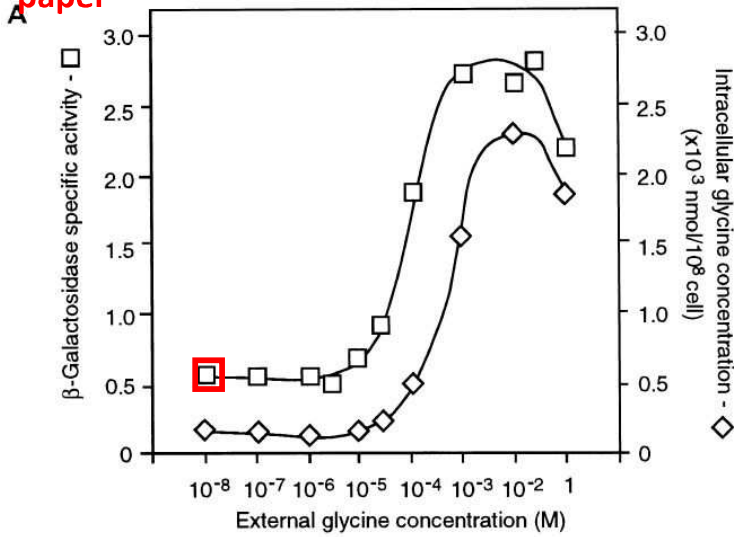
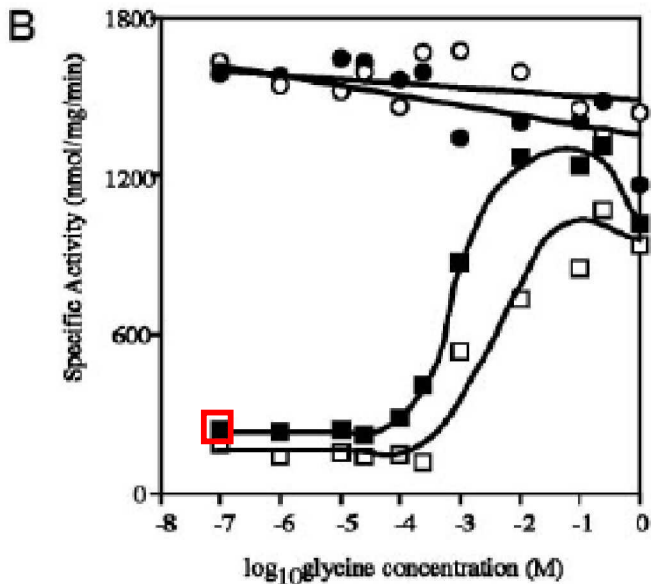


Fig. 7A is re-used in 1999 JBC paper



JBC 1999 (PMID 10187845) Fig. 2B



Open squares in MM paper are same data as filled squares in JBC paper.

N.B. x- axis is shifted by 1 log between data sets

Fig. 1. Re-use of yeast colony images to represent different conditions

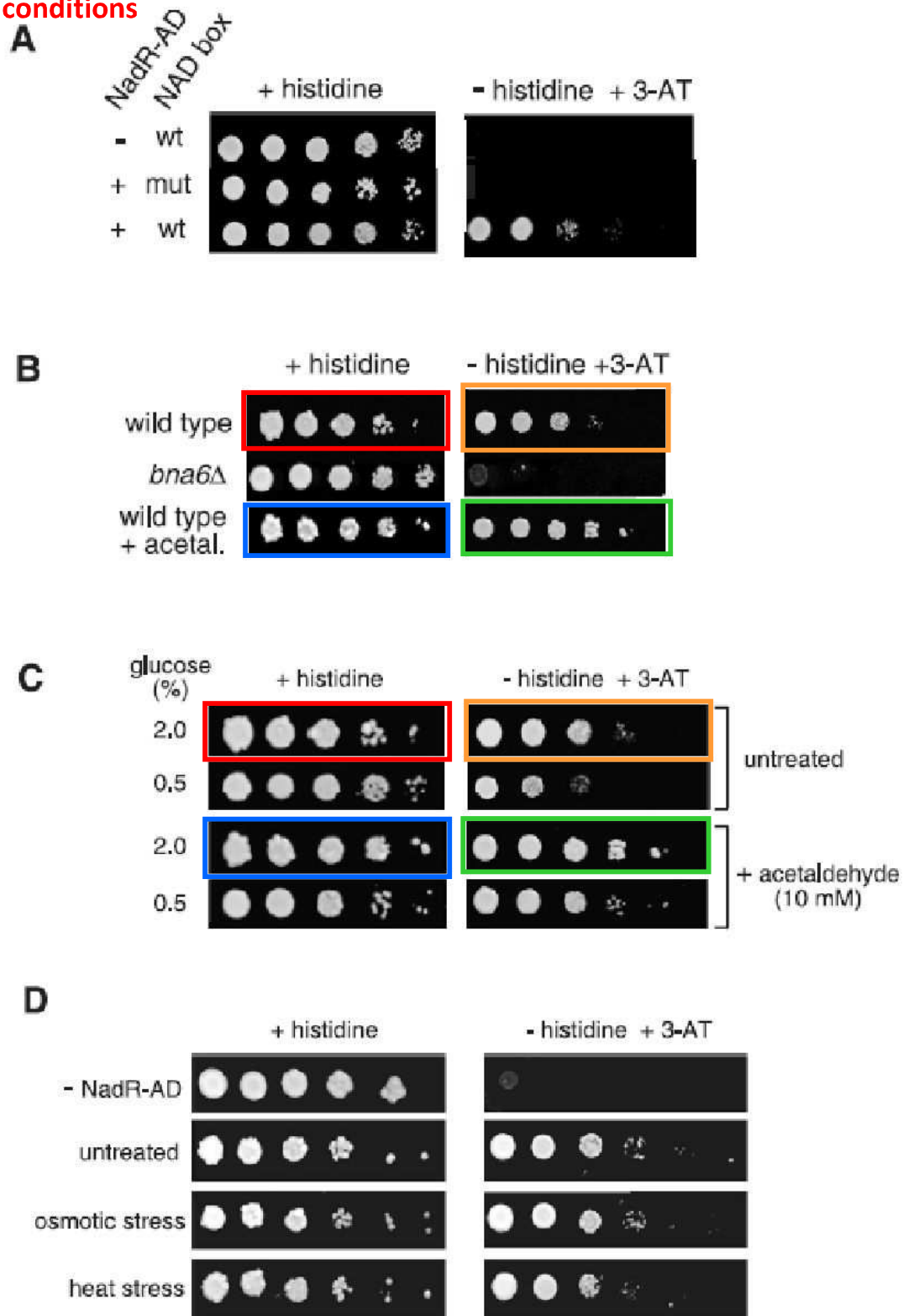


Fig. 3D. Colony images spliced together

